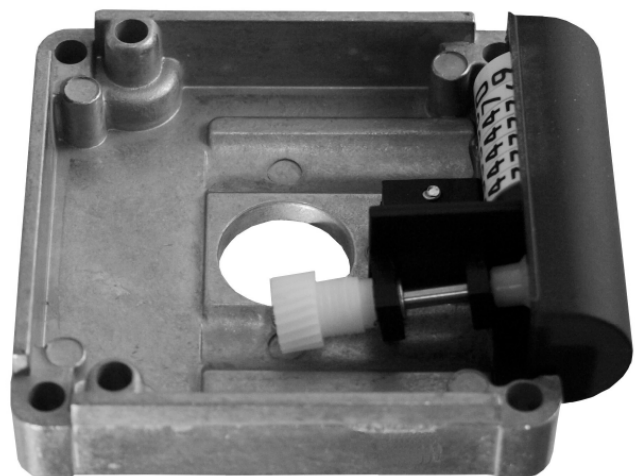
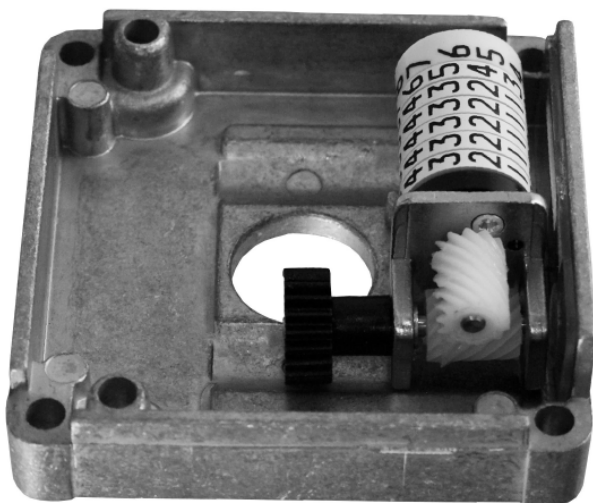
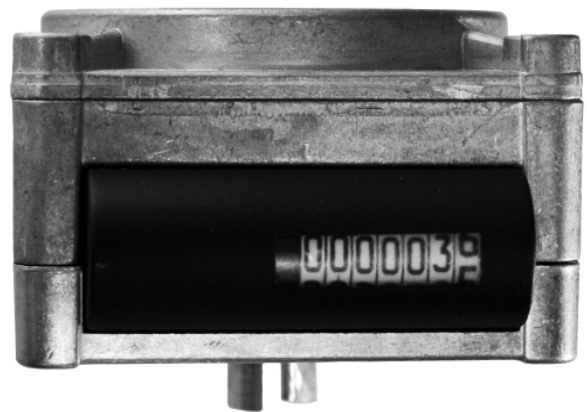


ELTOMATIC

Complete solutions between meter and computer

Integrated EZ10 and EZ15 Totalizers



Eltomatic A/S • Fabriksvej 6 • DK9490 Pandrup • Denmark

Phone +45 9824 6166 • Fax +45 9824 6310 • www.eltomatic.com • eltomatic@eltomatic.com

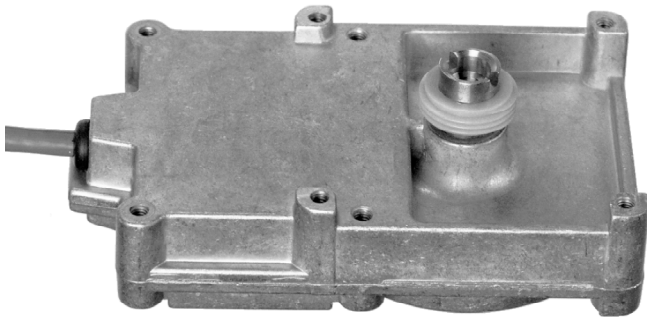
To supplement Eltomatic's Ex-approved incremental shaft encoders, we have a wide range of mechanical totalizers. The program consists of totalizers integrated with the shaft encoder.

The EZ10 and EZ15 totalizers are add-on mechanical counters to be mounted on the shaft encoder type 01-08. The Totalizer is placed under the shaft encoder and fixed with two screws and the assembly is ready to be mounted on a meter.

Installation is simple and no external components or work is required.

This is a very cost efficient solution.

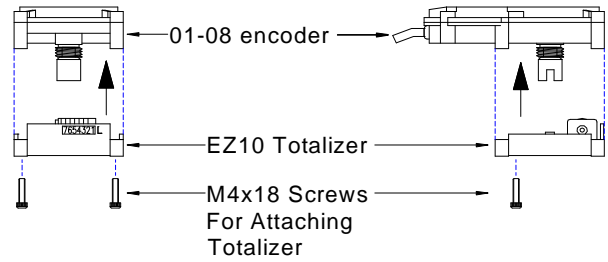
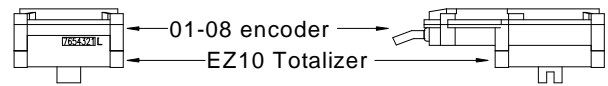
The Totalizer consists of a worm gear from the encoder shaft that drives a mechanical, non-resettable 7 digit counter and it is all mounted in a sturdy die-cast aluminium housing. The Totalizer can be adapted to most couplings and the encoder shaft to counter gear ratio can be specified.



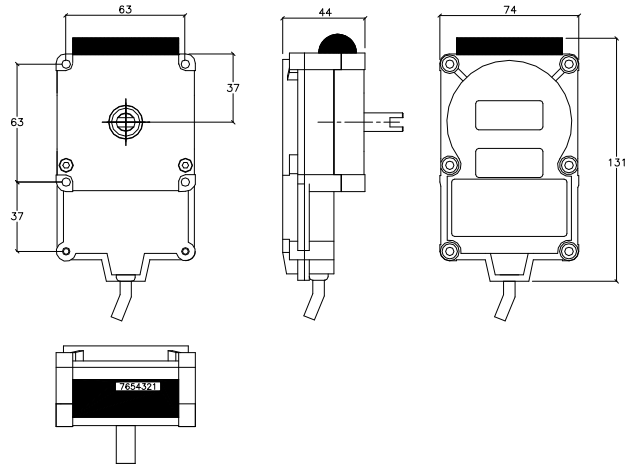
An encoder has to be made with a worm gear wheel mounted on the coupling shaft to make it possible to drive the integrated totalizer.

Specifications

Counting ratio	gearing to shaft to be agreed
Direction of rotation	to be agreed
Display (EZ10 only)	7 digit -4mm enlarged 1.3:1, black on white top coming
Display (EZ15 only)	7 digit -4mm, black on white top coming
Material housing	Aluminium die cast
Sealing method	Optional sealing screw
Labels	None
Mounting on encoder	2 pcs M4 screws
Mounting on meter	M4 screws
Marking	Optionally an 'L' stamped to the right of the display



The EZ10 counter is read through a plastic window which is lens formed to enlarge the digits.



The EZ15 counter protrudes from the aluminium housing to make reading easier in situations where physical access to the display is limited.

It is also possible to use an empty, unworked totalizer/gearbox housing as a mounting bracket for the type 01-08 encoder.

Options

Meter mounting	Standard, K90 or to be agreed
Shaft exit	ø15, ø18, or ø29
Gearing to shaft	1:1, 2:1 or 4:1 or specified
Direction of coupling	CW or CCW
Reading angle (EZ10)	0°
Reading angle (EZ15)	-40°, 0°, +40°